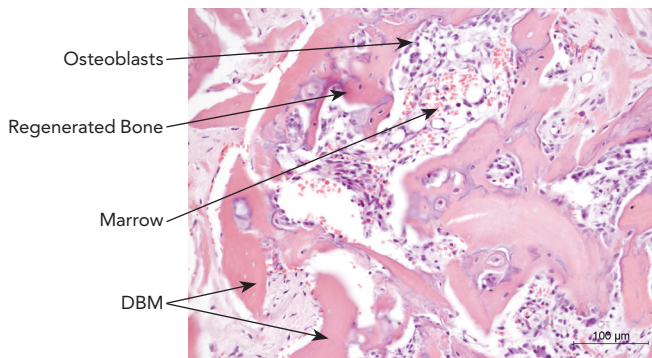


Reficio Link™

DBM Cortical Fibers

DCI Donor Services Tissue Bank's advanced fiber technology combines the regenerative capacity of interconnected fibers with the maximum availability of growth factors endogenous to cortical bone. Comprised of 100% demineralized cortical fibers, Reficio Link™ DBM Fibers offer moldable, cohesive handling characteristics and provide an ideal scaffold for the delivery of autologous stem cells.

- Maintains cohesive handling characteristics to provide precise graft placement without the use of a synthetic carrier¹
- Engineered for enhanced regenerative capacity compared to particulate DBM²
- Demineralized to expose native osteoinductive growth factors³
- Delivers osteogenic cells when hydrated with bone marrow aspirate⁴
- Proven regenerative capacity by exhibiting all five elements of new bone formation in validated animal models⁵



Histological evidence of bone formation

DBM Fibers	Size	Freeze Dried
	1 cc	27500218
	2.5 cc	27512318
	5 cc	27500418
	10 cc	27500518



Reference:

1. Data on file, DCI Donor Services Tissue Bank 2. Martin GJ, et. Al. Spine, 1999, 24, 637-645 3. Urist MR. Science, 1965, 150, 893-899 4. Muschler GF. J Bone Joint Surg Am. 1997, 79, 1699-1709 5. Data on file, DCI Donor Services Tissue Bank

DCI Donor Services Tissue Bank is registered with the FDA, certified by the AATB and licensed with the states of California, Delaware, Florida, Illinois, Maryland, New York, and Oregon.

MK 116 Rev 001 2/2018

DCI Donor Services Tissue Bank
an extraordinary commitment to science, health and hope



1714 Hayes Street, Nashville, TN 37203 | Phone: 615.564.3769 | Toll-free: 800.216.0319 | tissuebank.dcid.org